

LEAVES

Fishing Rod Lamp Series Product Introduction

Endless Design Extension of Leaves Color Bridge Series



S CONTENT

01

Fishing Rod Series product features

02

Parameter Display-Fishing Rod Series

03

Application

04

LEAVES Brand introduction



01

Fishing Rod Series (Product Features)

What is Fishing Rod Lamp?

LEAVES Fishing Rod Lamp

Extension of LEAVES Color Bridge Series

Leaves Color Bridge series, are flexible, widely used in commerce space & home decoration, with a wide range of applications due to the flexible mobility of lamps.

LEAVES Fishing Rod Lamp series are endless design extension of Leaves color bridge series. It is composed by Color Bridge Series & LEGO Series.



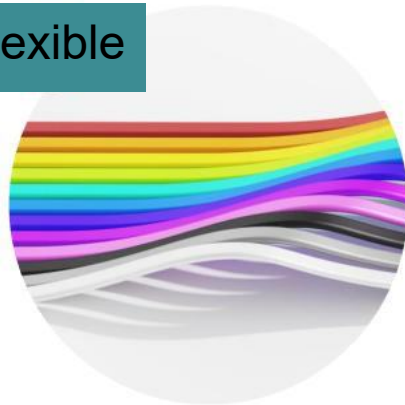
Endless Design Extension-Fishing Rod Lamp Series



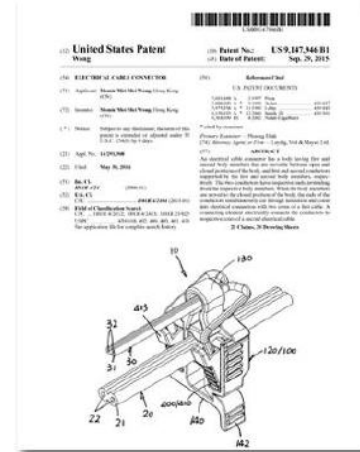
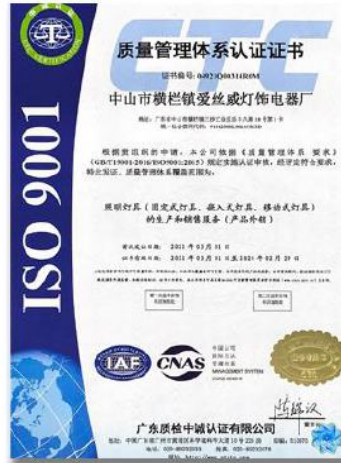
Advantage

Multiple Patents protected

flexible



Low voltage track (24V)



Advantage

Variety of colors for choice
 Flexible rail
 Copper wrapped up
 More safe

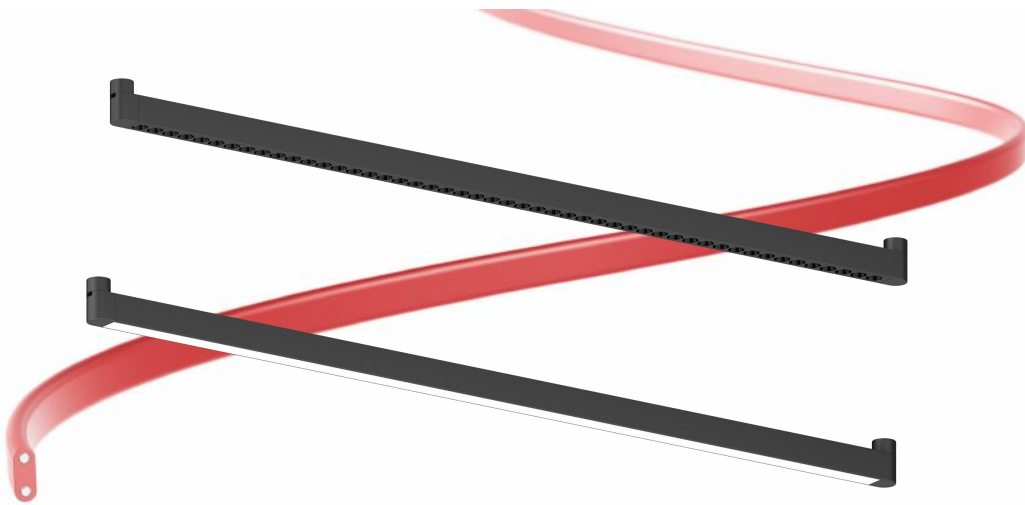


Compare with hard track
 Easy to cut
 Minimal waste
 Save cost

Easy & fast to install
 Simple tool needed only
 Save labor cost

Advantage

Multiple module options
Allow for DIY customization



Advantage



Endless designs extension
Available 2D and 3D space
Create inspiration for designers
Easy to adjust after renovation

Advantage



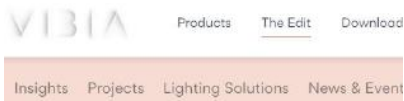
Track in roll
100M/Roll
Module designs
Low shipping cost
Easy carry

Environment friendly



Market Trend:

From the design and application trends of several major international brands We can easily see that, This type of products are bringing a big chance in the designing direction.



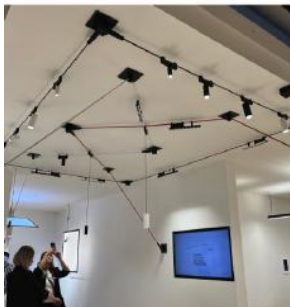
Flexibile Track Light will lead the big trend, Extend to Fishing Rod Lamp Series etc.

Artemide

FLOS

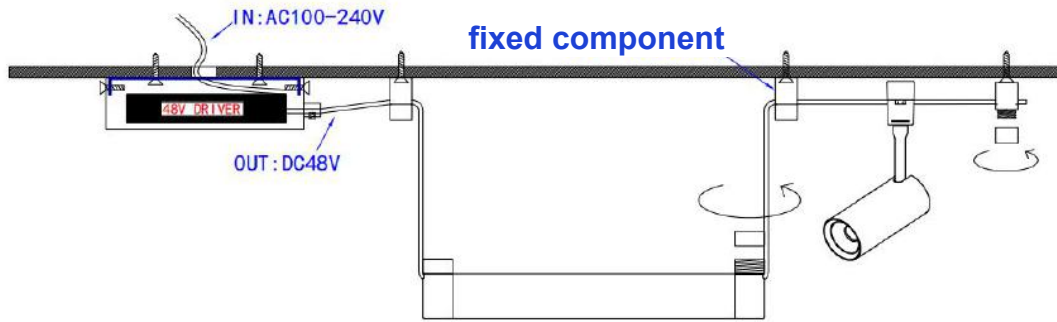
Light Solutions ▾ Expertise ▾ Stories Resources ▾ Contact us ▾

🔍 🌐 📄



String Light

Power Supply 1 (Available for Dimmer)



Power Supply 2 (non-dimmer)



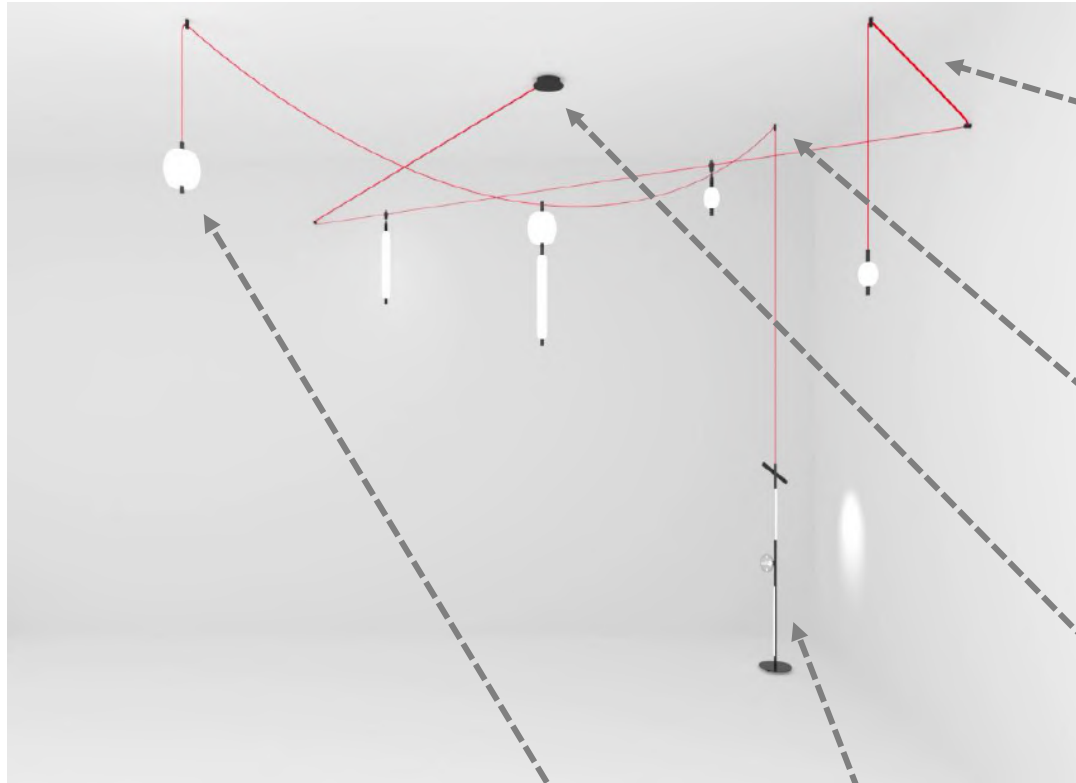
0-10V



Triac



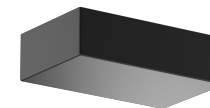
Basis element



Description: Flexible rail
Model: DGX



Description: Fastener
Model: GDJ
Size: 20mm Dia, H36mm
Material: aluminum



Description: Power Supply Box
for surface installation only
Size 1: L180*W110*H50mm (within 150W)
Size 2: L230*W125*H50mm (within 350W)

Lego Series



Connection for 2 systems of color bridge & LEGO



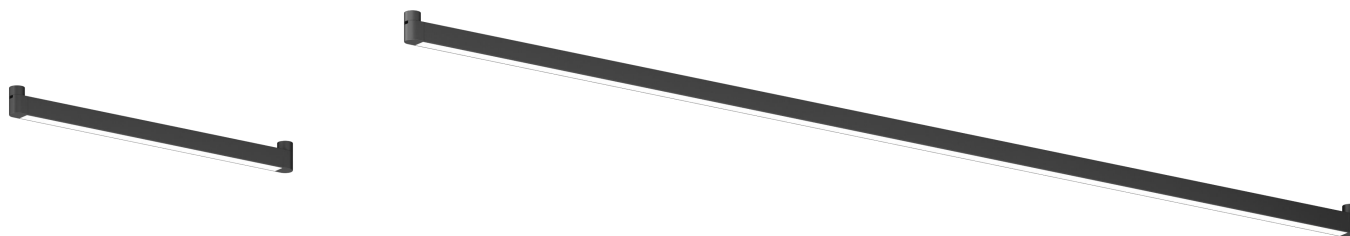
Rotation





**Color Bridge
Series**

24V Color Bridge Series Light module - floodlight

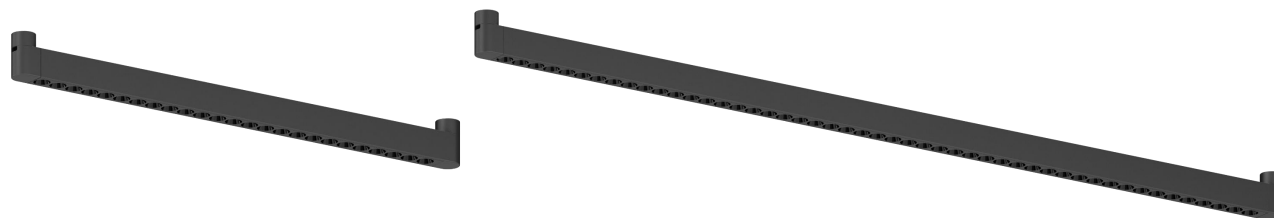


Item NO#	Power	Beam angle	CRI	CCT	Output Voltage	Color	IP	Fixture size
CQA-XTM-2J-20W	20W	100°	Ra≥90	3000K/3500K/4000K/5000K	48V	Black	IP20	L494*W23*H42.8mm
CQA-XTM-4J-40W	40W	100°	Ra≥90	3000K/3500K/4000K/5000K	48V	Black	IP20	L925*W23*H42.8mm
CQA-XTM-7J-70W	70W	100°	Ra≥90	3000K/3500K/4000K/5000K	48V	Black	IP20	L1572*W23*H42.8mm
CQA-XTM-9J-90W	90W	100°	Ra≥90	3000K/3500K/4000K/5000K	48V	Black	IP20	L2000*W23*H42.8mm

Advantage: Various of lengths

Application: Ceiling, suspended in office, vertical as atmosphere or as partition light etc.

24V Color Bridge Series Light module - Grille lamp

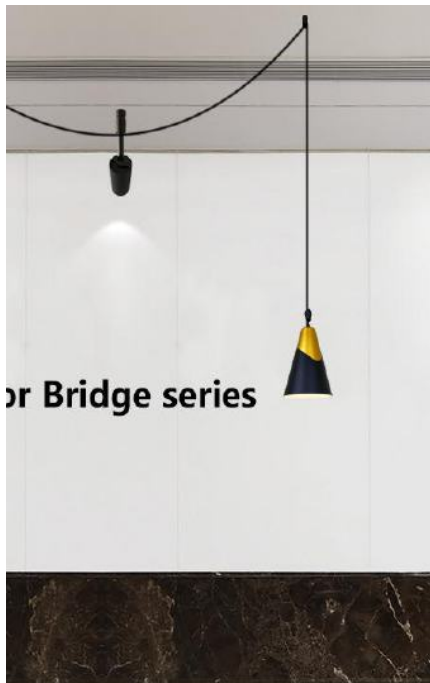


Item NO#	Power	Beam angle	CRI	CCT	Output Voltage	Color	IP	Fixture size
CQA-XTD-R24T-20W	20W	24/36°	Ra≥90	3000K/3500K/4000K/5000K	48V	Black	IP20	L494*W23*H42.8mm
CQA-XTD-R48T-40W	40W	24/36°	Ra≥90	3000K/3500K/4000K/5000K	48V	Black	IP20	L925*W23*H42.8mm
CQA-XTD-R84T-70W	70W	24/36°	Ra≥90	3000K/3500K/4000K/5000K	48V	Black	IP20	L1572*W23*H42.8mm
CQA-XTD-R108T-90W	90W	24/36°	Ra≥90	3000K/3500K/4000K/5000K	48V	Black	IP20	L2000*W23*H42.8mm

Advantage: Various of lengths, Accent lighting with deep anti-glare design

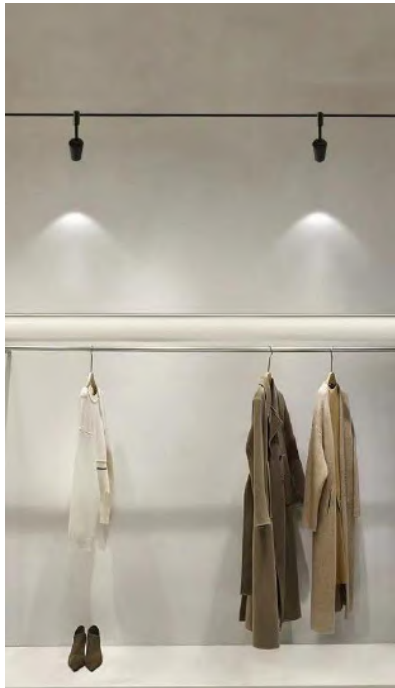
Application: Ceiling, suspension line as office lighting, dining table, tea table lamp, more beautiful, can be multiple of intergrated or scattered design.

24V Color Bridge Series Light module - Spot Light



Item NO#	Power	Beam angle	CRI	CCT	Output Voltage	Color	IP	Fixture size
CQP-SP-021-7W	7W	15°/24°/36°	Ra≥90	3000K/3500K/4000K/5000K	48V	Black	IP20	Dia 45*H100mm
CQP-SP-022-12W	12W	15°/24°/36°	Ra≥90	3000K/3500K/4000K/5000K	48V	Black	IP20	Dia 55*H115mm
CQP-SP-023-18W	18W	15°/24°/36°	Ra≥90	3000K/3500K/4000K/5000K	48V	Black	IP20	Dia 65*H135mm

24V Color Bridge Series Light module - Spot Light



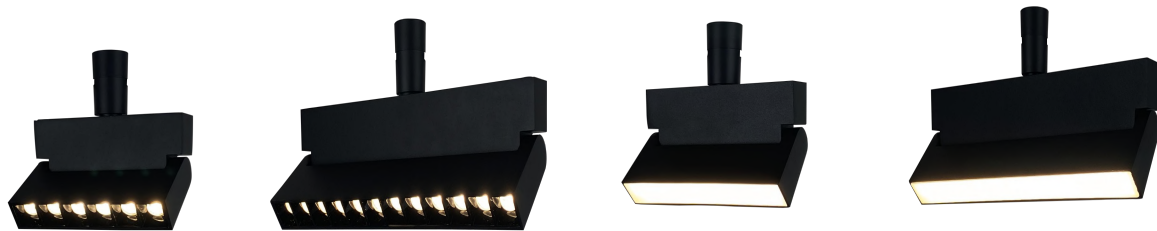
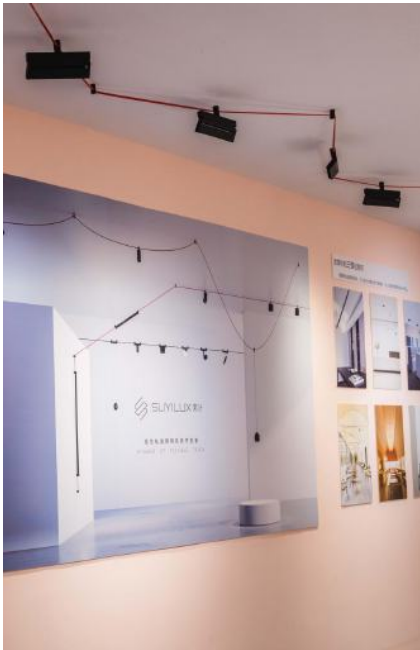
Item NO#	Power	Beam angle	CRI	CCT	Output Voltage	Color	IP	Fixture size
CQP-SP-011-12W	12W	15°/24°/36°	Ra≥90	3000K/3500K/4000K/5000K	48V	Black	IP20	Dia 50*H130mm
CQP-SP-012-18W	18W	15°/24°/36°	Ra≥90	3000K/3500K/4000K/5000K	48V	Black	IP20	Dia 65*H156mm
CQP-SP-013-24W	24W	15°/24°/36°	Ra≥90	3000K/3500K/4000K/5000K	48V	Black	IP20	Dia 76*H182mm

24V Color Bridge Series Light module - Multifunctional Spot Light



Item NO#	Power	Beam angle	CRI	CCT	Output Voltage	Color	IP	Fixture size
CQP-SP-032-10W	10W	Adjustable 10°-55°	Ra≥90	3000K/3500K/4000K/5000K	48V	Black	IP20	Dia 55*H115mm
CQP-SP-033-18W	18W	Adjustable 10°-55°	Ra≥90	3000K/3500K/4000K/5000K	48V	Black	IP20	Dia 65*H135mm
CQP-SP-042-6W	6W	15°/24°/36°	Ra≥90	3000K/3500K/4000K/5000K	48V	Black	IP20	Dia 40*H95mm
CQP-SP-052-12W	12W	15°/24°/36°	Ra≥90	3000K/3500K/4000K/5000K	48V	Black	IP20	Dia 50*H126mm

24V Color Bridge Series Light module - Wall washer Light



Item NO#	Power	Beam angle	CRI	CCT	Output Voltage	Color	IP	Fixture size
CQP-BXQD-21-6W	6W	24°/36°	Ra≥90	3000K/3500K/4000K	48V	Black	IP20	L112*W23*H87mm
CQP-BXQD-22-12W	12W	24°/36°	Ra≥90	3000K/3500K/4000K	48V	Black	IP20	L220*W23*H87mm
CQP-BXQM-11-6W	6W	100°	Ra≥90	3000K/3500K/4000K	48V	Black	IP20	L118*W23*H87mm
CQP-BXQM-12-12W	12W	100°	Ra≥90	3000K/3500K/4000K	48V	Black	IP20	L231*W23*H87mm

24V Color Bridge Series Light module - Spot Light



Item NO#	Power	Beam angle	CRI	CCT	Output Voltage	Color	IP	Fixture size
CQP-SP-69C-6W	6W	15°/24°/36°	Ra≥90	3000K/3500K/4000K/5000K	48V	White	IP20	Dia 71*H度50mm
CQP-SP-92C-9W	9W	15°/24°/36°	Ra≥90	3000K/3500K/4000K/5000K	48V	White	IP20	Dia 94*H度34mm
CQP-DW02-R72-12W	12W	15°/24°/36°	Ra≥90	3000K/3500K/4000K/5000K	48V	Black	IP20	Dia 72*H度108mm
CQP-DW02-R92-18W	18W	15°/24°/36°	Ra≥90	3000K/3500K/4000K/5000K	48V	Black	IP20	Dia 92*H度130mm

24V Color Bridge Series Light module - Spot Light



Item NO#	Power	Beam angle	CRI	CCT	Output Voltage	Color	IP	Fixture size
CQP-DW01-R55-6W	6W	15°/30°/45°	Ra≥90	3000K/3500K/4000K/5000K	48V	Black	IP20	D55*142mm
CQP-DW01-R75-12W	12W	15°/30°/45°	Ra≥90	3000K/3500K/4000K/5000K	48V	Black	IP20	Dia 75*H172mm
CQP-DW01-R94-18W	18W	15°/30°/45°	Ra≥90	3000K/3500K/4000K/5000K	48V	Black	IP20	Dia 95*H192mm
CQP-DW01-R115-24W	24W	15°/30°/45°	Ra≥90	3000K/3500K/4000K/5000K	48V	Black	IP20	Dia 115*H202mm

24V Color Bridge Series Light module - Strip Light



Item NO#	Power	Beam angle	CRI	CCT	Output Voltage	Color	IP	Fixture size
G18-100A48	12W	360°	Ra≥90	3000K/6000K	48V	White	IP20	Dia 18 L1000mm
G18-150A48	18W	360°	Ra≥90	3000K/6000K	48V	White	IP20	Dia 18CL1500mm
G18-200A48	24W	360°	Ra≥90	3000K/6000K	48V	White	IP20	Dia 18L2000mm
G18-300A48	36W	360°	Ra≥90	3000K/6000K	48V	White	IP20	Dia 18 L3000mm



LEGO Series

LEGO Series

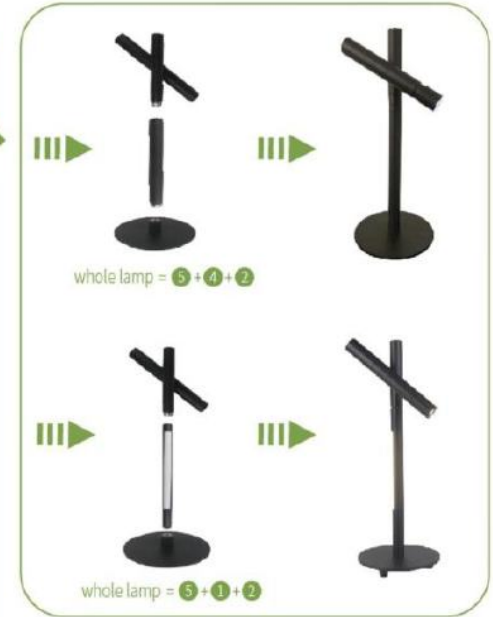
LEGO series, it is DC24V. have multiple module designs.
It can communicate with our color bridge series and DIY decorative lights system.



Module Design, available DIY.



Leaves



Finished Lamp:



Item: DD1-BI(G005)-4-G15*150-C2-1-E2-1
 Size: H141.5CM
 Wattage: 36W



Item: DD1-C3-2-E3-2WI(G011)
 Size: H150CM
 Wattage: 15.5W



Item: DD1-BI (G007) -3-E4-2
 Size: H157.5CM
 Material: 10.5W
 Material: Aluminum +Iron+glass
 Voltage: Transfer AC220V to DC24V

Item: DD1-A2C3-1-E1-1-E4-2
 Size: H159CM
 Wattage: 12W
 Material: Aluminum +Iron+Silicon
 Voltage: Transfer AC220V to DC24V







rotation assembly

Component 1



Description: Spot light
Item: A
Size: length with spiral port: 13.5CM
without spiral port: 13CM
fixture length: 17.5CM
maximum length: 18.5CM
Wattage: 3W
Material: Aluminum
CCT.: 3500K



Description: LED source for glass shape
(without acrylic)
Item: B
Size: without spiral port: 23CM
length with spiral port: 23.5cm
Wattage: 4.5W
Material: Aluminum
CCT.: 3500K



Description: LED source for glass shape
(with acrylic)
Item: BI
Size: without spiral port: 23CM
length with spiral port: 23.5cm
Wattage: 3.5W
Material: Aluminum+Acrylic
CCT.: 3500K



Description: End side spotlight
Item: H
Size: $\phi 3 \times 15$ CM
Wattage: 3W
Material: Aluminum
CCT.: 3500K



Description: Silicon tube
Item: G15*100/G15*150/G15*200
Size: cap size: 2.3cm
Tube diameter: 1.5cm
Length: 100CM/150CM/200CM
Wattage: 12W/18W/24W
Material: silicon
CCT.: 3500K



Description: Strip lighting
Item: C2/C3/C4
Size: length with spiral port: 23.5cm/33.5cm/43.5cm
without spiral port: 23cm/33cm/43cm
Lighting length: 14cm/24cm/34cm
Wattage: 4W/6W/8W
Material: Aluminum+silicon
CCT.: 3500K

Component 2



Base



Wall Plate



Ceiling Plate

Component 3



Description: Aluminum straight pipe

Size: Dia 2.3cm

length without spiral

port: 11.5cm/21.5cm/31.5cm/41.5cm

with spiral port: 12cm/22cm/32cm/42cm

Material: Aluminum

Function: used for matching and transition when non light source (the height of lamp body can be increased at will)

03

Application



1. Floor Lamp: LGFL01
Fixture size: $\phi 25 \times 157$ CM
Finish: Sand Black
Material: Aluminum, Glass,
Iron base
Watt: 10.5W

2. Pendant: S1-2
Fixture size: $\phi 25 \times 20$ CM
Finish: Sand Black
Material: Opal Glass, Iron
Watt: 10W

3. Cable: 5 meter

1. Floor Lamp: LGFL01
Fixture size: $\phi 25 \times 157 \text{CM}$
Finish: Sand Black
Material: Aluminum, Glass,
Iron base
Watt: 10.5W each



3. Cable: 5 meter



1. Floor Lamp: LGFL02
Fixture size: $\phi 25 \times 150$ CM
Finish: Sand Black
Material: Aluminum, Iron
base
Watt: 6W

2. Pendant: S3-1
Fixture size: $\phi 24 \times 20$ CM
Finish: Sand Black
Material: Iron
Watt: 12W

3. Cable: 5 meter

Leaves



1. Floor Lamp: LGFL03
Fixture size: $\phi 25 \times 145$ CM
Finish: Sand Black
Material: Aluminum, Iron
base
Watt: 9W

2. Pendant: S4-3
Fixture size: $\phi 12 \times 17$ CM
Finish: Sand Black
Material: Iron, Opal glass
Watt: 21W

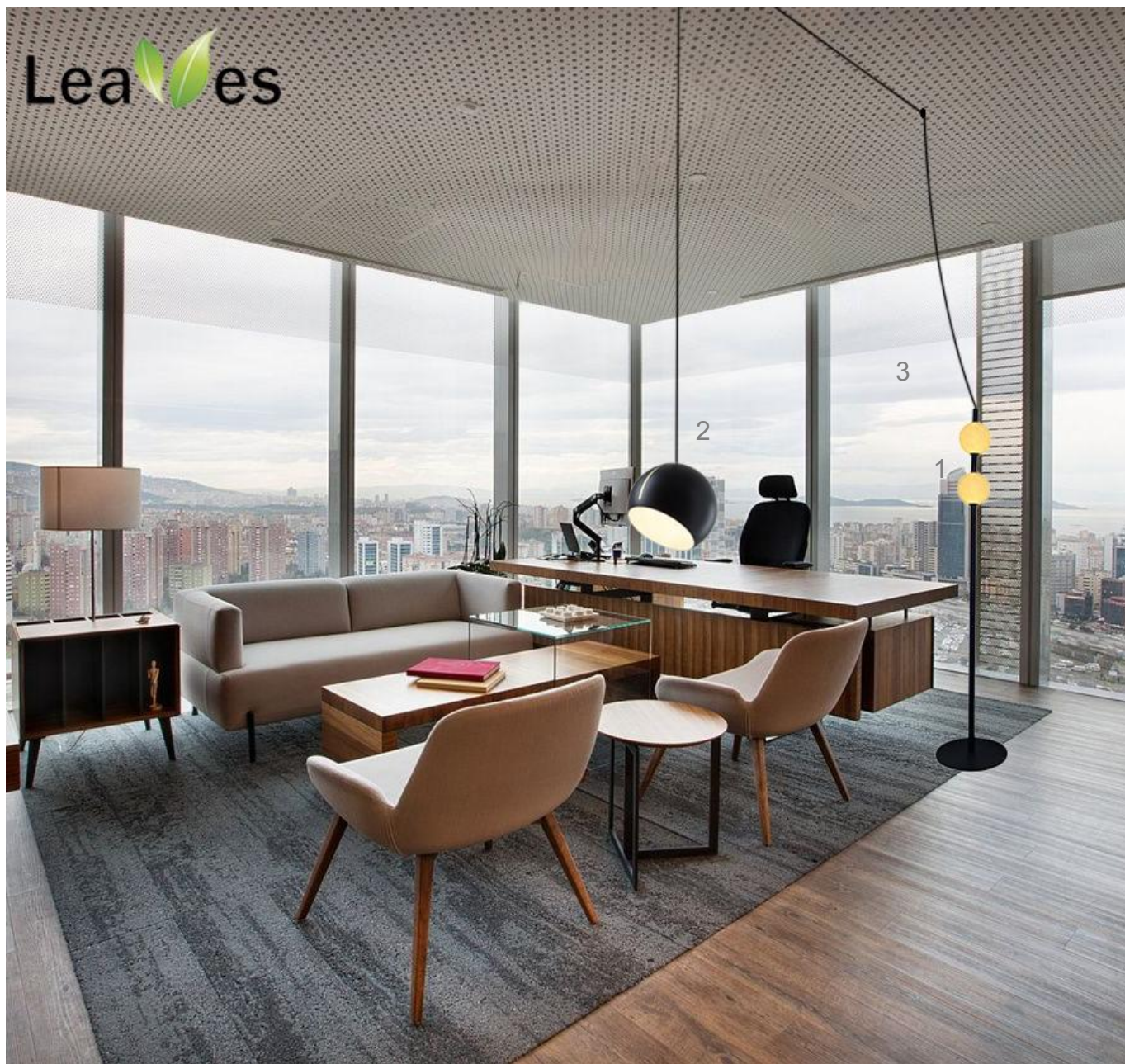
3. Cable: 5 meter

1. Floor Lamp: LGFL01
Fixture size: $\phi 25 \times 157 \text{CM}$
Finish: Sand Black
Material: Aluminum,
Glass, Iron base
Watt: 10.5W

2. Pendant: S5-2
Fixture size: $\phi 15 \times 15 \text{CM}$
Finish: Sand Black
Material: Opal glass, Iron
Watt: 10W

3. Cable: 5 meter





Leaves

1. Floor Lamp: LGFL04
Fixture size: $\phi 25 \times 140 \text{CM}$
Finish: Sand Black
Material: Aluminum, Iron base
Watt: 14W

2. Pendant: S6-1
Fixture size: $\phi 25 \times 25 \text{CM}$
Finish: Sand Black
Material: Iron
Watt: 5W

3. Cable: 5 meter

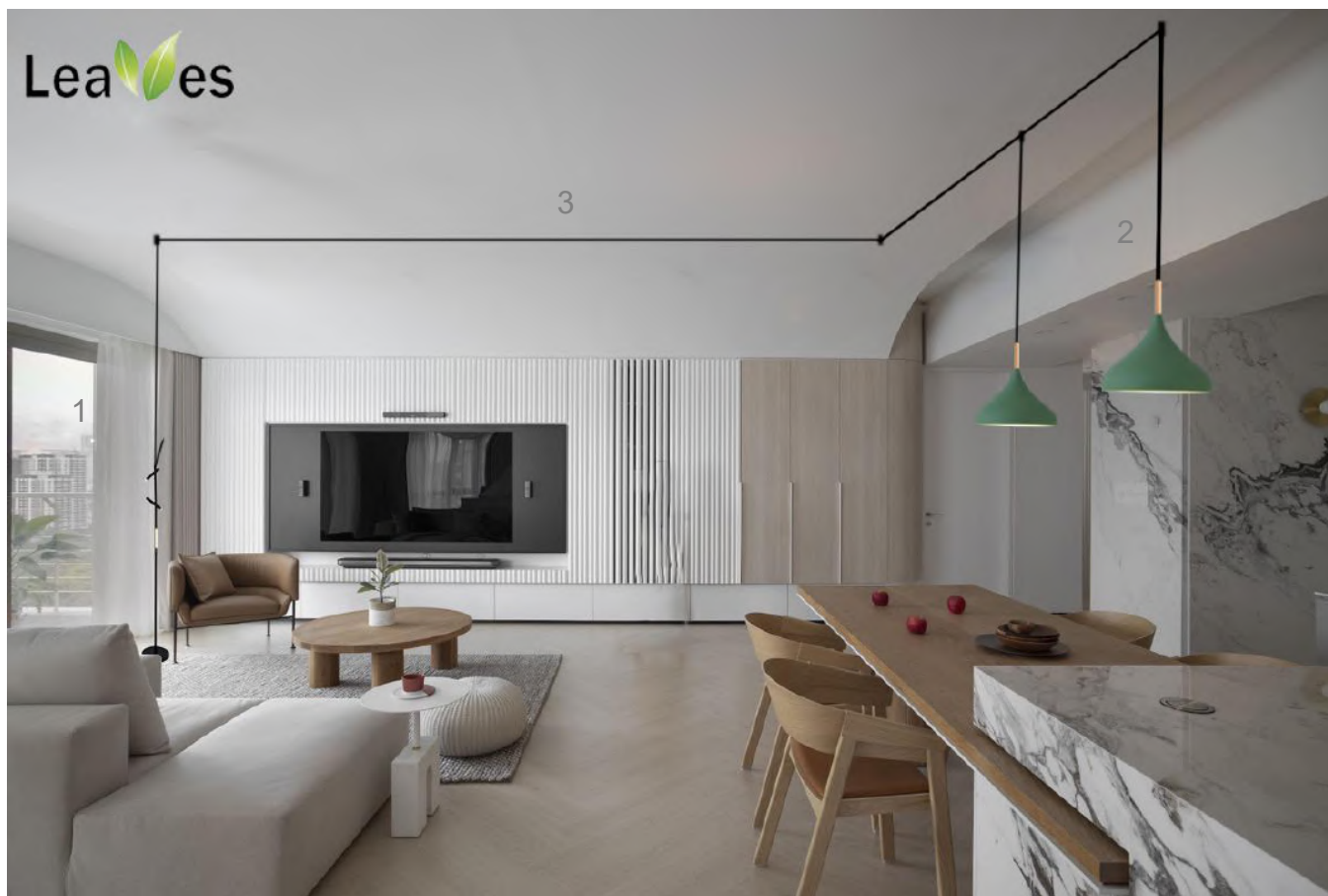
Leaves



1. Floor Lamp: LGFL05
Fixture size: $\varnothing 25 \times 150 \text{CM}$
Finish: Champagne gold
Material: Aluminum, Iron
base
Watt: 13W

2. Pendant: S7-1
Fixture size: $\varnothing 27 \text{CM}$
Finish: Sand Black
Material: Iron
Watt: 5W

3. Cable: 5 meter



1. Floor Lamp: LGFL02
Fixture size: $\phi 25 \times 150$ CM
Finish: Sand Black
Material: Aluminum, Iron
base
Watt: 10W

2. Pendant: S8-2
Fixture size: $\phi 30 \times 33$ CM
Finish: Green
Material: Iron
Watt: 10W

3. Cable: 8 meter



1. Floor Lamp: LGFL03
Fixture size: $\phi 25 \times 145 \text{CM}$
Finish: Sand Black
Material: Aluminum, Iron
base
Watt: 9W

2. Pendant: S9-1
Fixture size: $\phi 30 \times 18 \text{CM}$
Finish: Gray
Material: Iron
Watt: 5W

3. Cable: 5 meter



1. Floor Lamp: LGFL05
Fixture size: $\phi 25 \times 150$ CM
Finish: Champagne gold
Material: Aluminum, Iron
base
Watt: 13W

2. Pendant: S8-1
Fixture size: $\phi 30 \times 33$ CM
Finish: Dark Blue
Material: Iron
Watt: 5W

3. Cable: 5 meter



1. Floor Lamp: LGFL02
Fixture size: $\phi 25 \times 150 \text{CM}$
Finish: Sand Black
Material: Aluminum, Iron base
Watt: 6W

2. Pendant: S8-1
Fixture size: $\phi 30 \times 33 \text{CM}$
Finish: Orange
Material: Iron
Watt: 5W

3. Cable: 5 meter

1. Floor Lamp: LGFL06
Fixture size: $\phi 25 \times 148 \text{CM}$
Finish: Sand Black
Material: Aluminum,
Glass, Iron base
Watt: 10W



2. Pendant: S10-1
Fixture size: $\phi 35 \times 30 \text{CM}$
Finish: White
Material: Fabric, Iron
Watt: 5W

3. Cable: 5 meter

Leaves



1. Floor Lamp: LGFL03
Fixture size: $\phi 25 \times 145$ CM
Finish: Sand Black
Material: Aluminum, Iron
base
Watt: 9W

2. Pendant: S8-1
Fixture size: $\phi 30 \times 33$ CM
Finish: Sand Black
Material: Iron
Watt: 5W

3. Cable: 5 meter

1. Floor Lamp: LGFL03
Fixture size: $\phi 25 \times 145 \text{CM}$
Finish: Sand Black
Material: Aluminum,
Glass, Iron base
Watt: 9W

2. Pendant: S11-1
Fixture size: $\phi 35 \times 30 \text{CM}$
Finish: Sand Black
Material: Opal glass, Iron
Watt: 5W

3. Cable: 5 meter



1. Floor Lamp: LGFL07
Fixture size: $\phi 25 \times 148 \text{CM}$
Finish: Sand Black
Material: Aluminum,
Glass, Iron base
Watt: 16W

2. Pendant: S12-1
Fixture size: $\phi 39 \text{CM}$
Finish: Sand Black
Material: Iron
Watt: 5W

3. Spot Light: SD7-2
Fixture size: $\phi 39 \text{CM}$
Finish: Sand Black
Material: Aluminum
Watt: 14W

4. Cable: 8 meter





1. Floor Lamp: LGFL08
Fixture size: $\phi 25 \times 145$ CM
Finish: Sand Black
Material: Aluminum, Iron
base, PC
Watt: 16W

2. Pendant: S11-1
Fixture size: $\phi 35 \times 30$ CM
Finish: Sand Black
Material: Iron
Watt: 5W

3. Cable: 5 meter



1. Floor Lamp: LGFL09
Fixture size: $\phi 25 \times 140$ CM
Finish: Sand Black
Material: Aluminum, Iron
base, PC
Watt: 14W

2. Spot light: SD7-1
Finish: Sand Black
Material: Aluminum
Watt: 7W

3. Pendant: S13-1
Fixture size: $\phi 18$ CM
Finish: Sand Black
Material: Iron
Watt: 5W

4. Cable: 5 meter



1. Floor Lamp: LGFL010
Fixture size: $\phi 25 \times 160$ CM
Finish: Sand Black
Material: Aluminum, Iron
base, PC
Watt: 21W

2. Pendant: S14-1
Fixture size: $\phi 27$ CM
Finish: Sand Black
Material: Iron
Watt: 5W

3. Cable: 5 meter



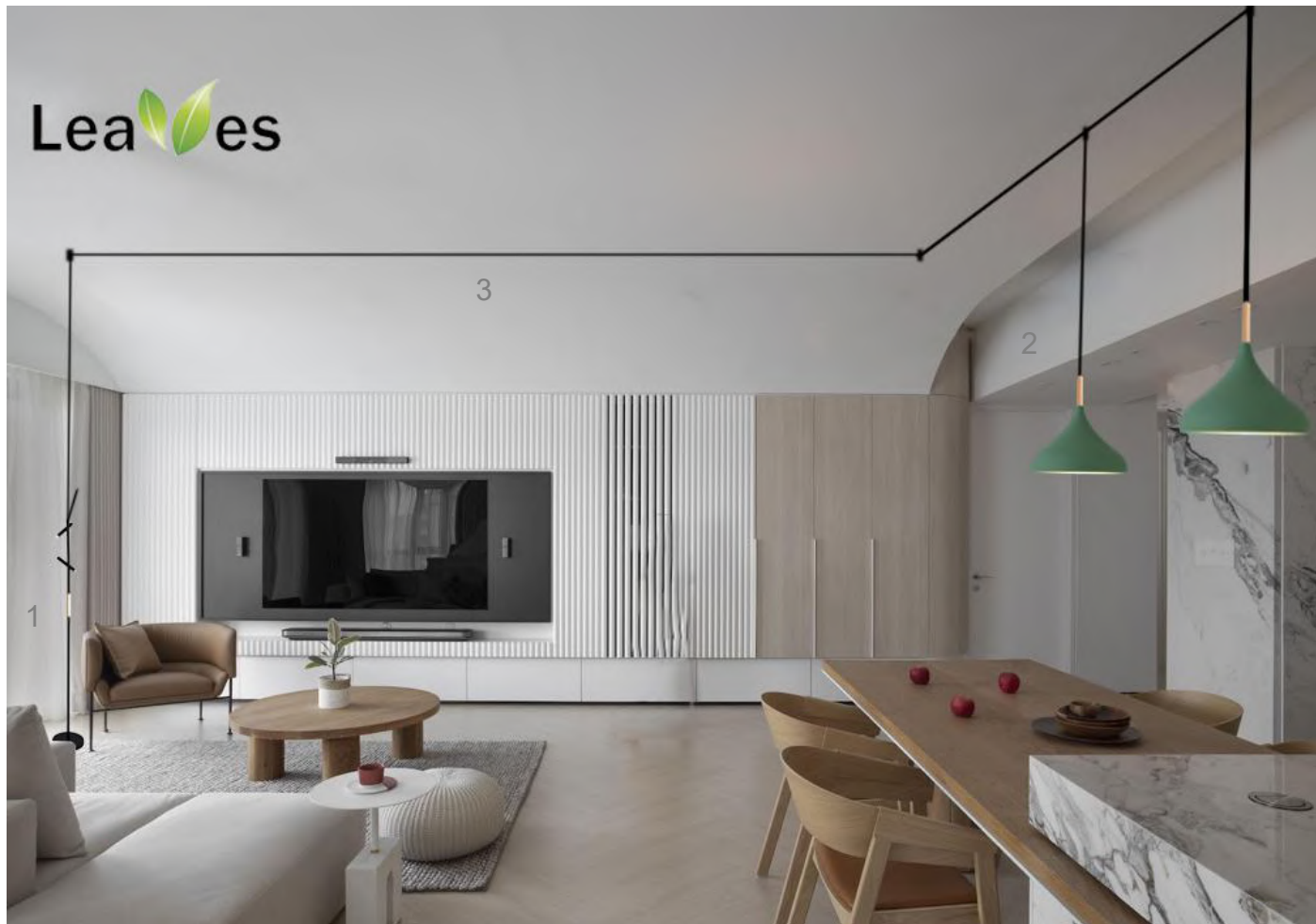
5.1. Floor Lamp: LGFL011
Fixture size: $\phi 25 \times 150$ CM
Finish: Sand Black
Material: Aluminum, Iron
base, PC
Watt: 24W

2. Spot Light: SD7
Finish: Sand Black
Material: Aluminum
Watt: 7W

3. Pendant: GS6-1
Fixture size: $\phi 18$ CM
Finish: Sand Black
Material: PC, Iron
Watt: 12W

4. Pendant: S15-1
Finish: Sand Black
Material: Iron
Watt: 5W

5. Cable: 5 meter



1. Floor Lamp: LGFL012
Fixture size: $\phi 25 \times 155$ CM
Finish: Sand Black
Material: Aluminum,
Iron base,PC
Watt: 12W

2. Pendant: S16-2
Fixture size: $\phi 38 \times 23$ CM
Finish: Green
Material: Iron
Watt: 10W

3. Cable: 8 meter



04

LEAVES company introduction

WHO AM I

LEAVES Lighting Technology Co., Ltd. is a brand under World Of Lights Group.

our factory established on 2002 and continuesly focuses on creating, researching and manufacturing lighting products, under ISO9001 strict quality control.

Leaves is dedicated on high quality, high performance and high reliable lighting products to global market.

Leaves is the pioneer of Led Flexible Track Light with multiple patents, easliest patents for flexible track light dated from Year 2009 and 2015, referring to a variety of fields such as invention patents, utility model patents, appearance patents, etc.



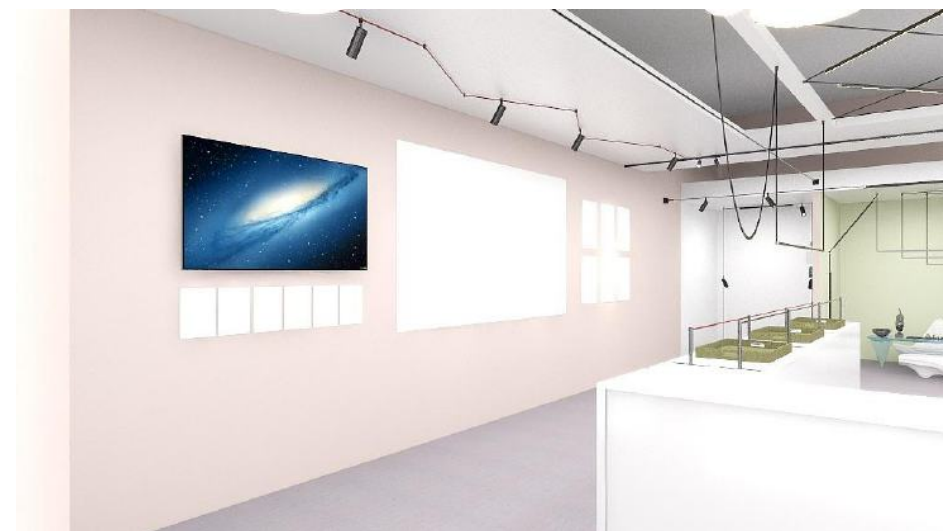
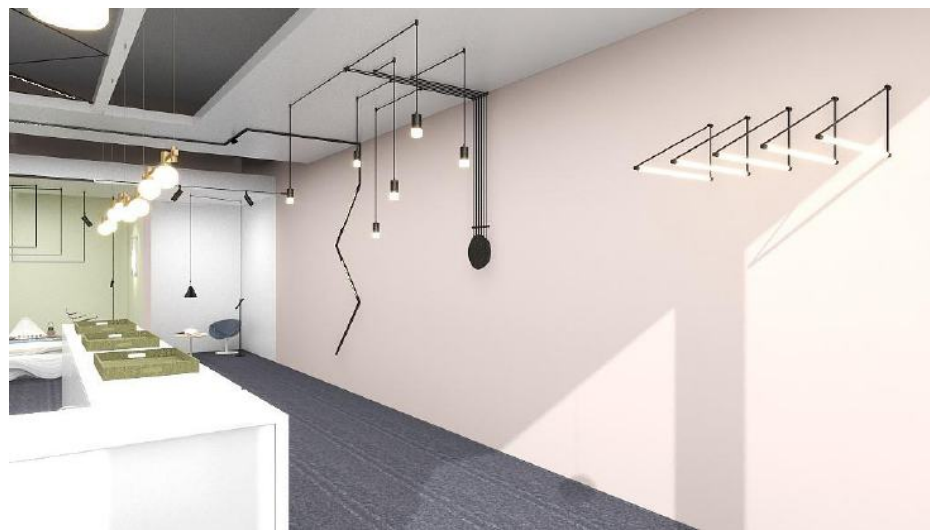
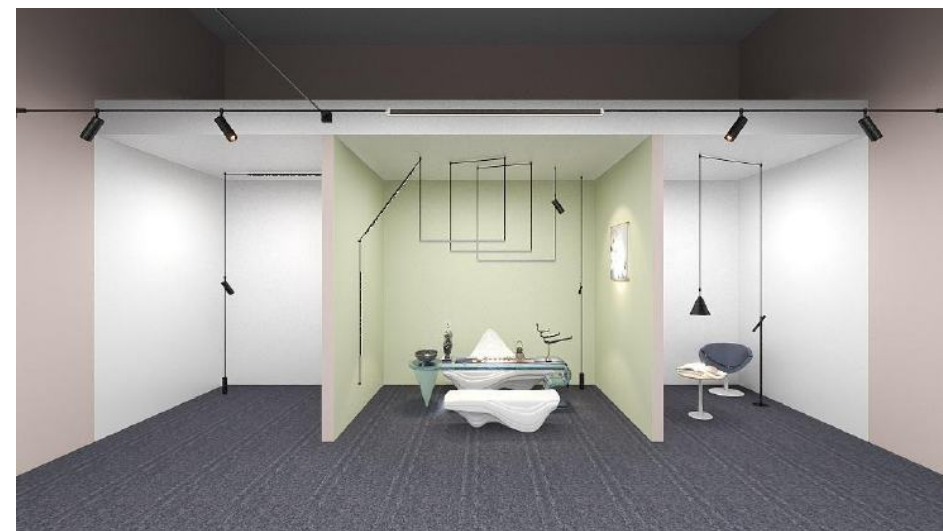
Leaves®

发挥你的三维创意吧
柔性轨道照明系统，可以结合你喜欢的灯具模块，私人定制专属你的设计作品。





Multiple patent certifications (including invention patents, utility model patents etc.)

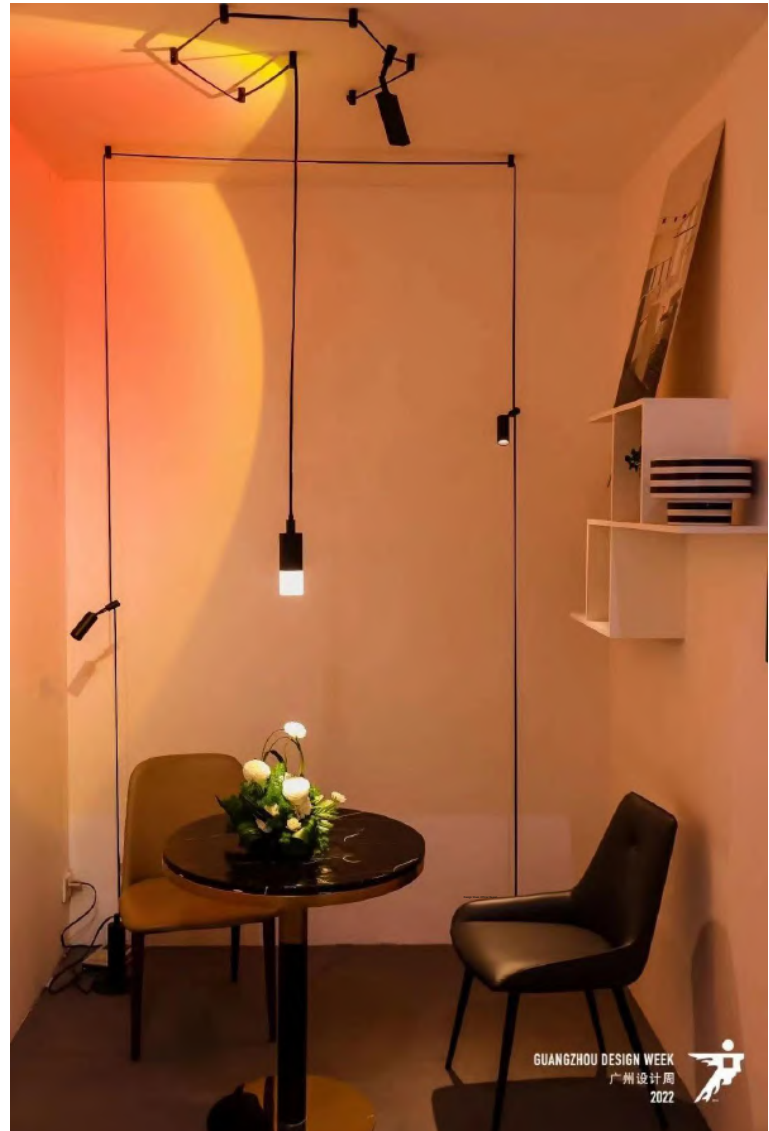


Product showroom display schemes





Well-known magazine reports



Interview by RTA Guangdong



Reported by Hong Kong Exhibition

THANK YOU !

Factory located: Zhongshan City